

Please read these instructions throughout before installing as incorrect fitting will invalidate the guarantee. These instructions to be used in conjunction with the main installation instructions when installing the Fixed Deflector Panel with the enclosure from new. The Fixed Deflector Panel can also be retro-fitted to an existing Ultimate 2 enclosure.

If you are unsure about these instructions please contact Kudos Shower Products 01539 564040

IMPORTANT

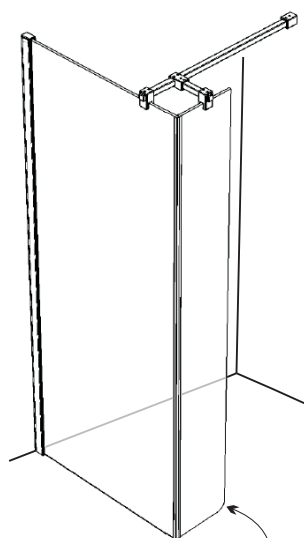
Check appearance of all product - any defects must be reported to Kudos Shower Products before assembly/installation. Claims for imperfections will only be accepted prior to assembly/installation

Any claims made under the terms of the Lifetime Guarantee must be reported to Kudos within 21 days of the fault occurring

PACK CONTENTS

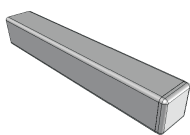
Glass Panel
Glass to Glass Corner Seal
Top Finial & Rail Junction Bracket
Short Stabiliser Rail - *for use where no Side Panel Component Pack is fitted*
3mm Allen Key

RECESS INSTALLATION



RADIUS CORNER TO BOTTOM

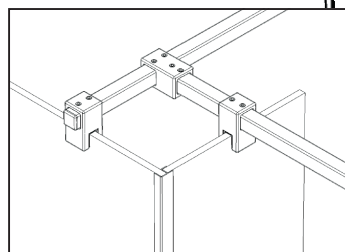
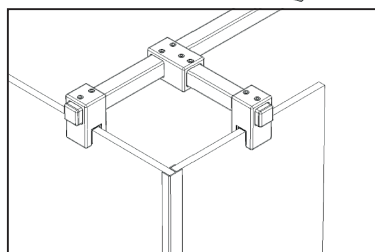
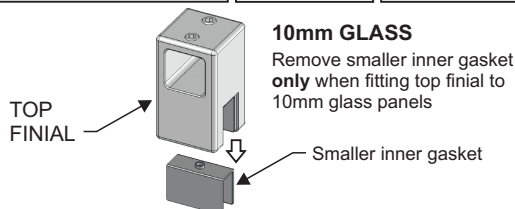
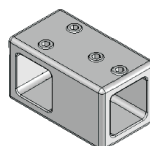
SHORT STABILISER RAIL



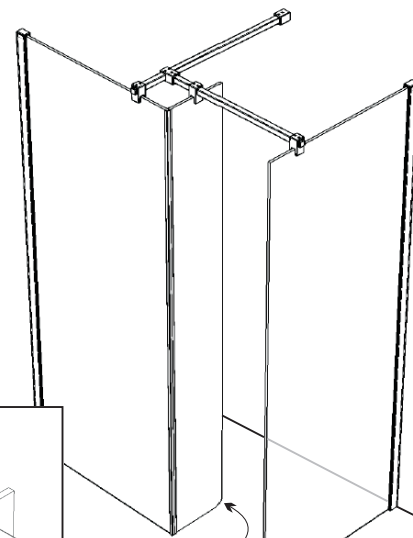
TOP FINIAL



RAIL JUNCTION BRACKET

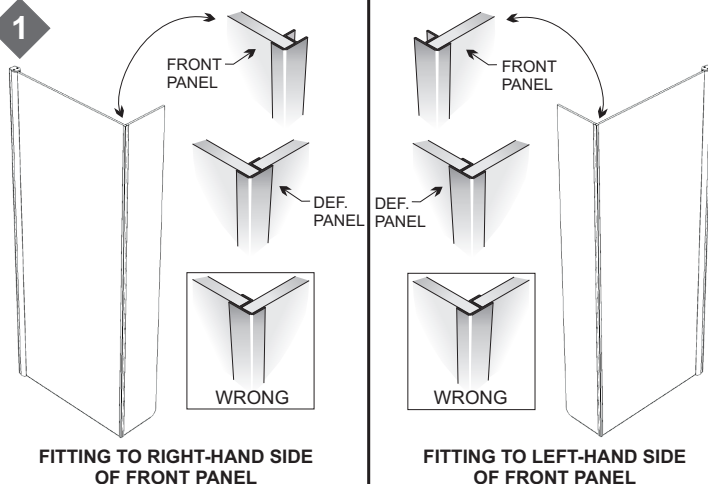


CORNER INSTALLATION



RADIUS CORNER TO BOTTOM

1



FIT CORNER SEAL

Push fit vertical corner seal onto the edge of the front panel glass, ensuring seal is level with top of glass. Ensure the seal is pushed fully home onto edge of the glass.

TIP Wipe edge of glass with clean, slightly damp cloth to ease fitment of seal.

2

FIT DEFLECTOR PANEL

Carefully offer up the Deflector Panel and push fit into the corner seal ensuring the top of the panel is level with the top of front panel glass. The corner seal must be pushed fully home onto both edges of the panels.

TIP

Use packing eg. cardboard, to support the bottom of the panel until the top support parts have been fitted.

3

FIT TOP SUPPORT PARTS

Fit the Deflector parts as shown above, ensuring all grub screws are fully tightened:

Rail Junction Bracket - ensure grub screws face towards ceiling, this part is not required if Side Panel Junction Bracket is already fitted.

Top Finial - ensure side grub screw faces towards inside of enclosure.

Short Stabiliser Rail - may be cut as necessary, using hacksaw, ensuring that this is fully engaged into the Rail Junction Bracket when fitted.

This part is not required for corner installations.

CLEANING - general

Use only warm soapy water and damp cloth/ sponge on a regular basis. Do not use abrasive scouring powders, chemicals or aerosol cleaners - these may result in damage to the surfaces, in particular, the plated component parts.

KUDOS LIFESHIELD GLASS TREATMENT

The Deflector Panel is pre-treated with Lifeshield on both surfaces.

THESE INSTRUCTIONS ARE TO BE LEFT WITH THE CONSUMER